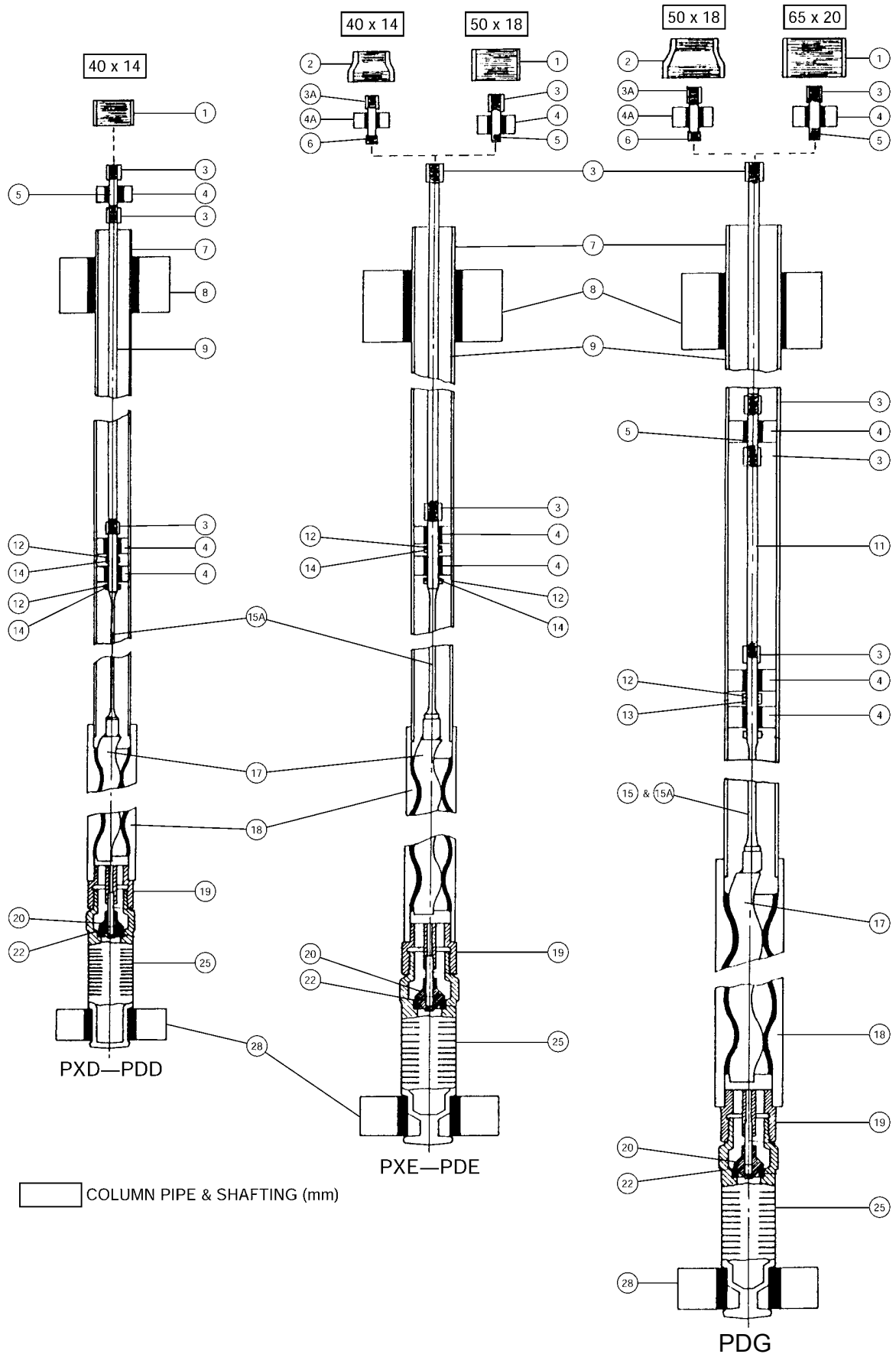




HELICAL ROTOR PUMPS

P BOREHOLE HELICAL ROTOR





**HELICAL ROTOR PUMPS**

# P HELICAL ROTOR ROTOR/STATOR SELECTION CHART

ROTOR	SIZE	STATOR	
		NATURAL	NITRILE
TDE003U	2		
TDE003W	4	PDE001U	N/A
TDE003Y	6	PDE001W	N/A
TDG003S	1		
TDG003V	3	N/A	PDG017P
TDG003W	5	N/A	PDG017Q
TDG003X	7		
TDG003H	9		
TDH003S	2		
TDH003V	4	N/A	PDH026V
TDH003X	6	N/A	PDH026X
TDH003R	8		
TDJ003V	4	N/A	PDJ026V
TDJ003W	5	N/A	PDJ026W
TDJ003X	6		



## HELICAL ROTOR PUMPS

## P BOREHOLE HELICAL ROTOR

## PDE

ILLUS NO.	PDE PART NO.	DESCRIPTION	MATERIAL
1		Socket - B.S.P. 2"	Galvanised Malleable Cast Iron
2	PDE060	Reducing Socket - B.S.P.	S.G. Iron GR. 24/17
3	NZV002	Drive Shaft Coupling	CS 1030 BR. Mild Steel
3A	NZT002	Drive Shaft Coupling	CS 1030 BR. Mild Steel
4	NZV004	Bearing	Natural Rubber Bonded to Brass Sleeve
4A	NZT004	Bearing	Natural Rubber Bonded to Brass Sleeve
5	NZV006	Drive Shaft Journal	Type 431 S.S. Bar
6	PDE045	Adaptor Journal	Type 431 S.S. Bar
7	PDE052	Outlet Pipe	Medium Galvanised Mild Steel Pipe
8	PFV007	Stabilizer	Natural Rubber
9	PDE050	Drive Shaft	CS 1030 BR. Mild Steel
12	PDD044J	Bearing Spacer Collar	Type 302 or 303 S.S. Bar
14	418286020	Spring Pin SPIROL 1 x 5/32"	S.S.
15A	PDE046K	Rotor Drive Shaft	Type 431 S.S. Bar
17	TDE003*	Rotor - Hard Chrome Plated	Type 304 S.S. (1)
18	PDE001*	Stator - S.G. Iron 27/12 (2)	Natural Rubber Lining
19	PDE058	Foot Valve Guide	Assembly
20	PDE055	Foot Valve	Type 302 S.S Bar (4)
22	383001022	O-Ring (Foot Valve Sealing Ring)	Nitrile Rubber
25	PDG007C	Strainer	Assembly
28	PDE008	Pump Stabilizer - Inlet	Natural Rubber

\* Refer to rotor/stator selection chart



## HELICAL ROTOR PUMPS

## P BOREHOLE HELICAL ROTOR

## PDG

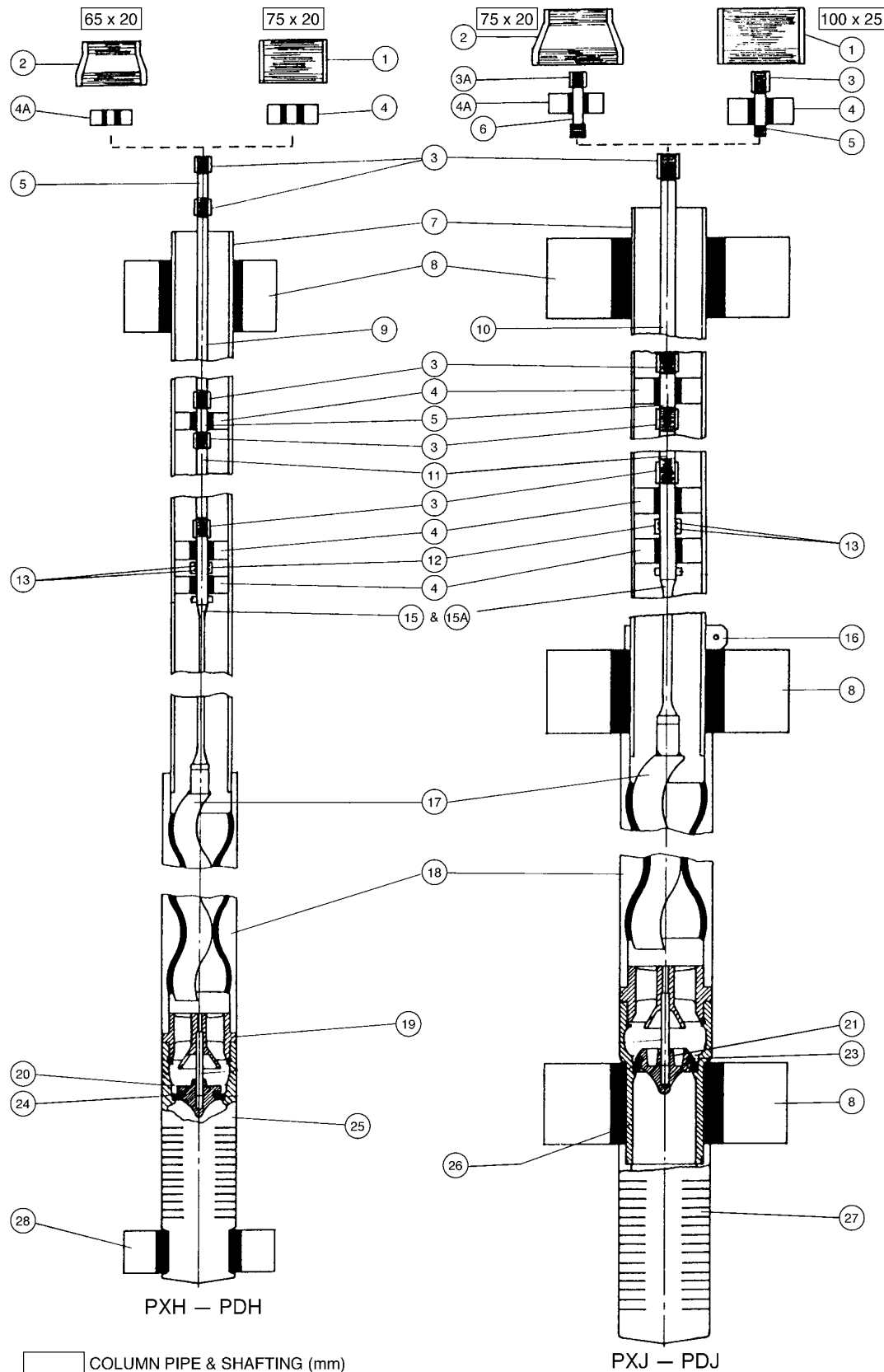
ILLUS NO.	PDG PART NO.	DESCRIPTION	MATERIAL
1		Socket - B.S.P. 2 1/2"	Galvanised Malleable Cast Iron
2	PDG060	Reducing Socket - B.S.P.	S.G. Iron GR. 24/17
3	NZW002	Drive Shaft Coupling	CS 1030 BR. Mild Steel
3A	NZV002	Drive Shaft Coupling	CS 1030 BR. Mild Steel
4	NZW004	Bearing	Natural Rubber Bonded to Brass Sleeve
4A	NZV004	Bearing	Natural Rubber Bonded to Brass Sleeve
5	NZW006	Drive Shaft Journal	Type 431 S.S. Bar
6	PDG045	Adaptor Journal	Type 431 S.S. Bar
7	PDG052	Outlet Pipe	Medium Galvanised Mild Steel Pipe
8	PFW007B	Stabilizer	Natural Rubber
9	PDG051	Drive Shaft	CS 1030 BR. Mild Steel
11	PDG050	Drive Shaft Extension	CS 1030 BR. Mild Steel
12	PDG044B	Bearing Spacer Collar	Type 302 or 303 S.S. Bar
13	383001017	O-Ring (Bearing Spacer Collar)	Nitrile Rubber
15	PDG046K	Rotor Drive Shaft	Assembly
17	TDG003*	Rotor - Hard Chrome Plated	Type 304 S.S. (1)
18	PDG017*	Stator - S.G. Iron 27/12 (2)	Nitrile Rubber Lining
19	PDG058	Foot Valve Guide	Assembly
20	PDE055	Foot Valve	Type 302 S.S Bar (4)
22	383001022	O-Ring (Foot Valve Sealing Ring)	Nitrile Rubber
25	PDG007C	Strainer	Assembly
28	PDE008	Pump Stabilizer - Inlet	Natural Rubber

\* Refer to rotor/stator selection chart



HELICAL ROTOR PUMPS

P BOREHOLE HELICAL ROTOR





## HELICAL ROTOR PUMPS

## P BOREHOLE HELICAL ROTOR

## PDH

ILLUS NO.	PDH PART NO.	DESCRIPTION	MATERIAL
1		Socket - B.S.P. 3"	Galvanised Malleable Cast Iron
2	PDH060	Reducing Socket - B.S.P.	S.G. Iron GR. 24/17
3	NZW002	Drive Shaft Coupling	CS 1030 BR. Mild Steel
4	NZX004	Bearing	Natural Rubber Bonded to Brass Sleeve
4A	NZW004	Bearing	Natural Rubber Bonded to Brass Sleeve
5	NZW006	Drive Shaft Journal	Type 431 S.S. Bar
7	PDH052	Outlet Pipe	Medium Galvanised Mild Steel Pipe
8	PFX007	Stabilizer	Natural Rubber
9	PDG051	Drive Shaft	CS 1030 BR. Mild Steel
11	PDG050	Drive Shaft Extension	CS 1030 BR. Mild Steel
12	PDG044B	Bearing Spacer Collar	Type 302 or 303 S.S. Bar
13	383001017	O-Ring (Bearing Spacer Collar)	Nitrile Rubber
15	PDH046L	Rotor Drive Shaft	Assembly
17	TDH003*	Rotor - Hard Chrome Plated	Type 304 S.S. (1)
18	PDH026*	Stator - S.G. Iron 27/12 (2)	Nitrile Rubber Lining
19	PDH058S	Foot Valve Guide	Assembly
20	PDH014	Foot Valve	Type 302 S.S Bar (4)
24	PDH019	Foot Valve Seal	Urethane Elastomer
25	PDH007B	Strainer	Assembly
28	PDH008	Pump Stabilizer - Inlet	Natural Rubber

\* Refer to rotor/stator selection chart

## PDJ

ILLUS NO.	PDJ PART NO.	DESCRIPTION	MATERIAL
1		Socket - B.S.P. 4"	Galvanised Malleable Cast Iron
2	PDJ060	Reducing Socket - B.S.P.	S.G. Iron GR. 24/17
3	NZY002	Drive Shaft Coupling	CS 1030 BR. Mild Steel
3A	NZW002	Drive Shaft Coupling	CS 1030 BR. Mild Steel
4	NZY004	Bearing	Natural Rubber Bonded to Brass Sleeve
4A	NZX004	Bearing	Natural Rubber Bonded to Brass Sleeve
5	NZY006	Drive Shaft Journal	Type 431 S.S. Bar
6	PDJ045	Adaptor Journal	Type 431 S.S. Bar
7	PDJ052B	Outlet Pipe	Medium Galvanised Mild Steel Pipe
8	PFY007	Stabilizer	Natural Rubber
10	PDJ051	Lower Drive Shaft	CS 1030 BR. Mild Steel
11	PDJ050	Drive Shaft Extension	CS 1030 BR. Mild Steel
12	PDJ044B	Bearing Spacer Collar	Type 302 or 303 S.S. Bar
13	383001020	O-Ring (Bearing Spacer Collar)	Nitrile Rubber
15	PDJ046KS	Rotor Drive Shaft	Assembly
16	PDJ011	Stabilizer Stop Collar	S.G. Iron GR. 32/7
17	TDJ003*	Rotor - Hard Chrome Plated	Type 304 S.S. (1)
18	PDJ026*	Stator - S.G. Iron 27/12 (2)	Nitrile Rubber Lining
19	PDJ015S	Foot Valve Guide	Assembly
21	NAD739C	Non-Return Valve	Cast Gunmetal
23	NAC038	Sealing Ring	Urethane Elastomer
26	PDJ012B	Foot Valve Body	Assembly
27	PDJ007	Strainer	S.G. Iron GR. 27/12

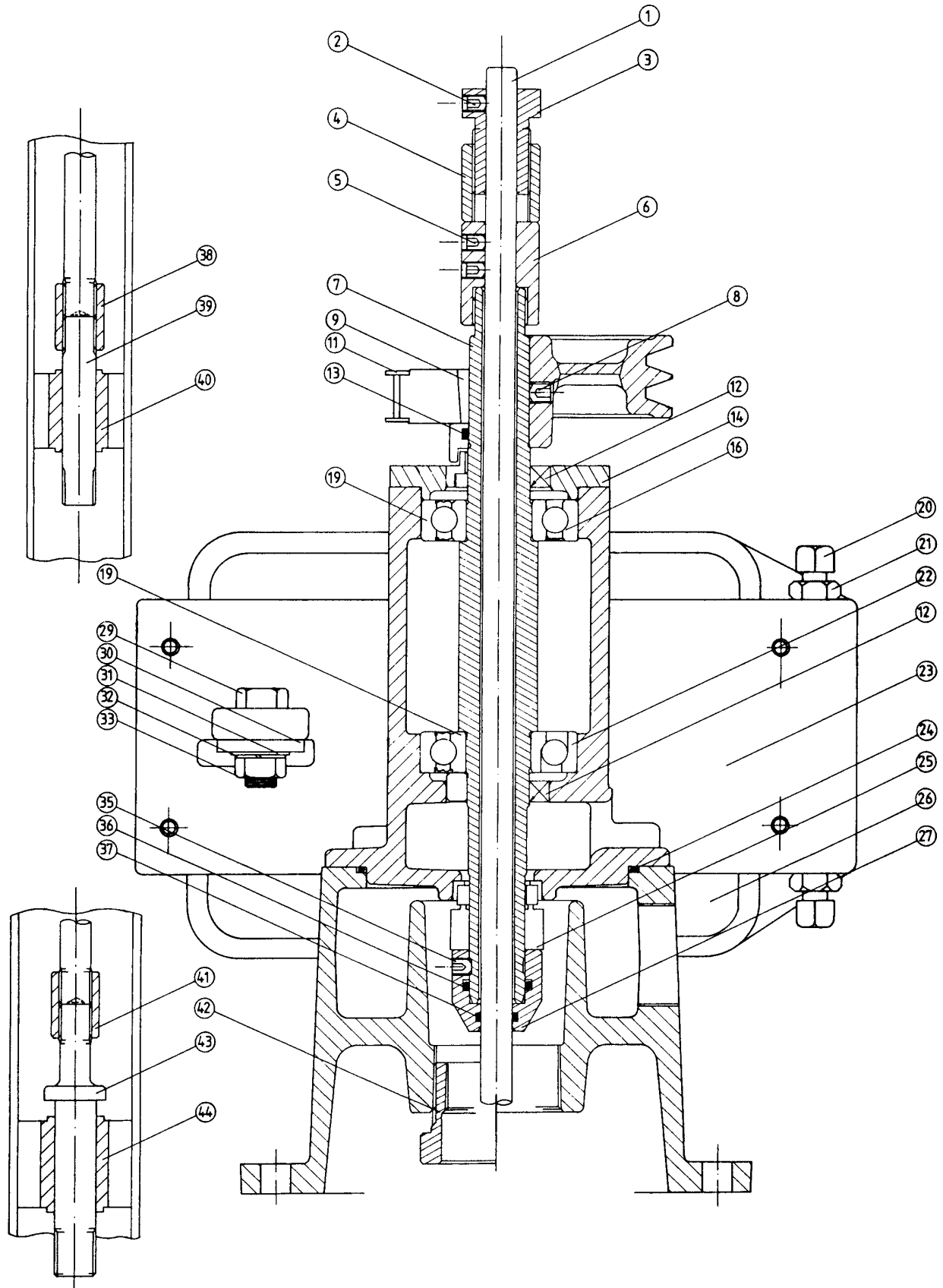
\* Refer to rotor selection chart



HELICAL ROTOR PUMPS

PFB/N

DRIVEHEAD & DISCHARGE HEAD





## HELICAL ROTOR PUMPS

## PFB/N

## DRIVEHEAD &amp; DISCHARGE HEAD

## PFB DRIVE HEAD &amp; DISCHARGE HEAD (NON-SOLAR)

ILLUS NO.	NO. PER UNIT	PART NO.	DESCRIPTION	MATERIAL
8	1	408621506	Knurled Cup Point Socket Setscrew M10 x 10	Zinc Plated
12	2	382001018	Oil Seal	
16	1	477100065	SKF 6306 RS Single Row Deep Groove Ball Bearing	
22	1	477106068	SKF 7306 B Single Row Angular Contact Ball Bearing	

## PFN DRIVE HEAD &amp; DISCHARGE HEAD (SOLAR)

ILLUS NO.	NO. PER UNIT	PART NO.	DESCRIPTION	MATERIAL
9	1		Fenner Taper - Lock Bush to suit 28mm Shaft	
11	1		Fenner Timing Belt Pulley Light Pitch	
13	1	383001021	O-Ring AN6227-21 (BS216)	Rubber
19	2	477100065	SKF 6306-2Z Single Row Deep Groove Ball Bearing	

## COMMON PARTS TO PFB &amp; PFN

ILLUS NO.	NO. PER UNIT	PART NO.	DESCRIPTION	MATERIAL
1	1	PFB010	Drive Shaft	9/16" dia Type 431 Stainless Steel Bar
2	2	408436255	5/16" x 5/16" UNC Cup Point Socket Setscrew	Stainless Steel
3	1	PFB009J	Shaft Adjustment Jackscrew	36mm A/F S1214 Hex Bar
4	1	PFG021	Shaft Adjustment Jackscrew Sleeve	36mm A/F BR. Mild Steel Hex Bar
5	4	408436255	5/16" x 5/16" UNC Cup Point Socket Setscrew	Stainless Steel
6	1	PFB008J	Drive Shaft Coupling Nut	36mm A/F S1214 Hex Bar
7	1	PFB004	Hollow Shaft	Type 304 Stainless Steel Hollow Bar
14	1	PDD145	Bearing Cap	Cast Iron GR 12
24	1	383002026	O-Gasket AN6230-26 (BS248)	Rubber
25	1	382016016	Mechanical Seal Crane Type 106	
27	1	PFB005K	Mechanical Seal Retainer	1 5/8" dia Brass Bar
35	2	408436255	5/16" x 5/16" UNC Cup Point Socket Setscrew	Stainless Steel
36	1	383001019	O-Ring AN6227-19 (BS214) NKC8	Rubber
37	1	383001011	O-Ring AN6227-11 (BS113)	Rubber
	4		1" x 3/8" UNC Hex Setscrew (Bearing Cap)	Zinc Plated High Tensile
	4		3/8" Spring Washer (Bearing Cap)	Zinc Plated Tempered Spring Steel
	4		1 1/2" x 7/16" UNC Hex Setscrew (Bearing Housing to Discharge Head)	Zinc Plated High Tensile
	4		7/16" Spring Washer (Bearing Housing to Discharge Head)	Zinc Plated Tempered Spring Steel
	1	PFG034	Lifting Bracket	51 x 51 x 6mm BLK Mild Steel Angle



## HELICAL ROTOR PUMPS

# PFB/N

## DRIVEHEAD & DISCHARGE HEAD

## MOTOR MOUNTING BRACKET PFB &amp; PFN

ILLUS NO.	NO. PER UNIT	PART NO.	DESCRIPTION	MATERIAL
20	2	YEB415	Base Mounting Setscrew	BR M.S. Square Bar Zinc Plated Cyanide Hardened
21	2		1/2" Hex Locknut	Zinc Plated Mild Steel
23	1	PFC005	Motor Bracket	Cast Iron GR. 12
26	1	PFC006	Motor Base Plate	Cast Iron GR. 12
29	1		1 1/2" x 1/2" Whit Hex Bolt	Zinc Plated Mild Steel
30	1	PFC020	Motor Baseplate Stay	40 x 6mm BLK Mild Steel Flat Bar
31	1		1/2" Washer	Zinc Plated Mild Steel
32	1		1/2" Spring Washer	Zinc Plated Tempered Spring Steel
33	1		1/2" Whit. Hex Nut	Zinc Plated
	1		1 1/2" x 1/2" Whit. Hex Bolt (Base Plate Stay to Bracket)	Zinc Plated Mild Steel
	1		1/2" Whit. Hex Nut (Base Plate Stay to Bracket)	Zinc Plated
	1		1/2" Spring Washer (Base Plate Stay to Bracket)	Zinc Plated Tempered Spring Steel
	3		1" x 3/8" UNC Hex Setscrew (Motor Bracket to Bearing Housing)	Zinc Plated High Tensile Steel

## ADDITIONAL PARTS FOR:

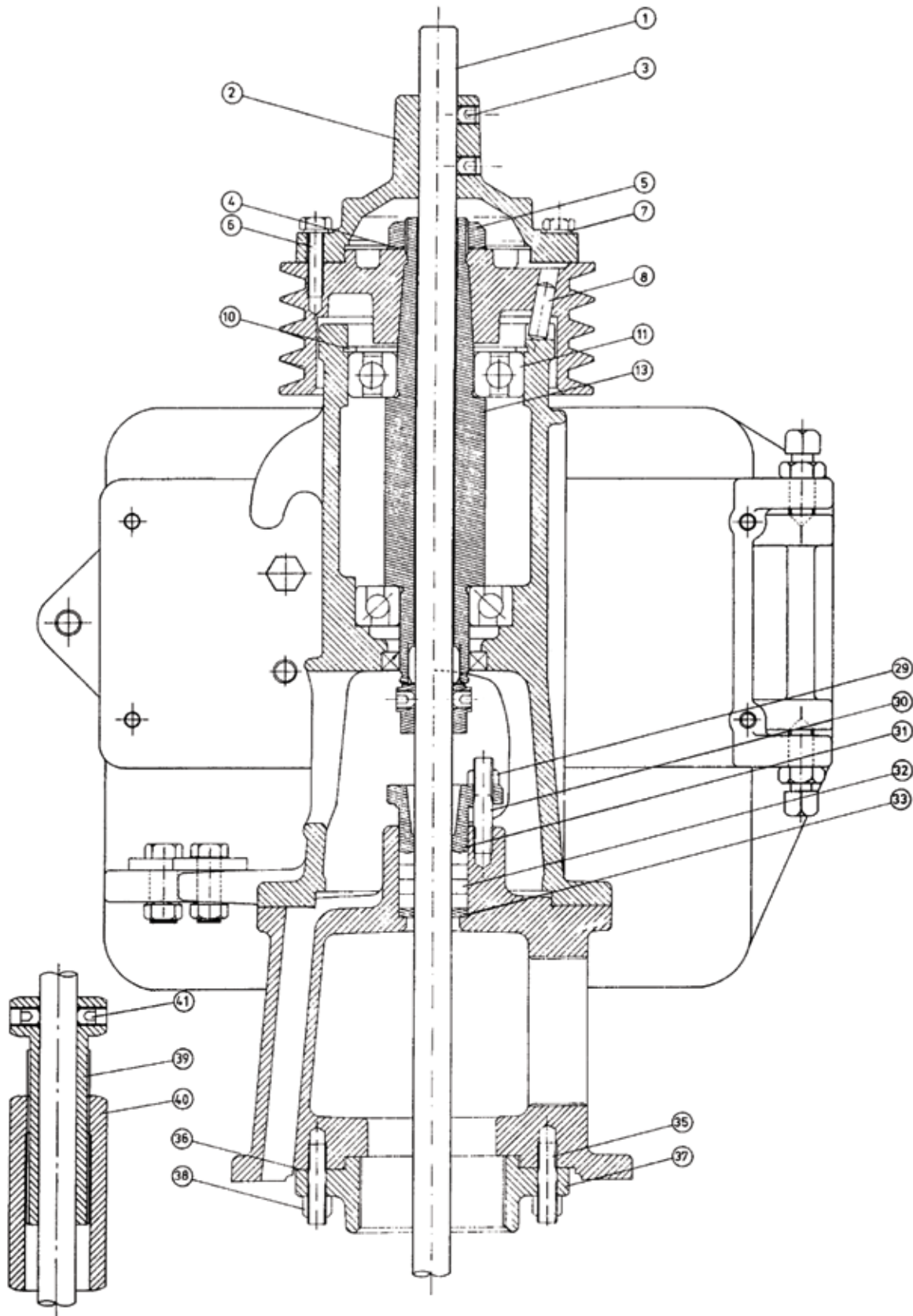
ILLUS NO.	NO. PER UNIT	PART NO.	DESCRIPTION	MATERIAL
<b>40mm COLUMN PIPE</b>				
38	1	NZT002	Drive Shaft Coupling	7/8" dia CS 1030 BR. Mild Steel
39	1	NZT006	Drive Shaft Journal	Type 431 Stainless Steel Bar
40	1	NZT004	Drive Shaft Bearing	Brass Sleeve with Moulded Natural Rubber
42	1	PFB011	Reducing Bush for 1 1/2" Column Pipe	S.G. Iron GR. 24/17 High Tensile
<b>50mm COLUMN PIPE</b>				
41	1	NZT002	Drive Shaft Coupling	7/8" dia CS 1030 BR. Mild Steel
43	1	PFB006	Drive Shaft Reduction Journal	Type 431 Stainless Steel Bar
44	1	NZV004	Drive Shaft Bearing	Brass Sleeve with Moulded Natural Rubber



HELICAL ROTOR PUMPS

PFD/H

DRIVEHEAD & DISCHARGE HEAD





**HELICAL ROTOR PUMPS**

# PFD/H

## DRIVEHEAD & DISCHARGE HEAD

### PFD VERTICAL DRIVE HEAD

ILLUS NO.	NO. PER UNIT	PART NO.	DESCRIPTION	MATERIAL
2	1	PFD023J	Drive Shaft Flange	Grade 12 Cast Iron
3	4	408436306	3/8" x 3/8" UNC Cup Point Socket Setscrew	
4	1	YB198	Pulley Retaining Nut Washer	.010" Shim - Brass
5	1	4EFD017	Flywheel Nut	6mm A/F BR. Mild Steel Hex
6	4		1 1/4" x 5/16" UNC Hex Setscrew	Zinc Plated High Tensile
7	4		5/16" Spring Washer	Zinc Plated Tempered Spring Steel
8	2	PFD010	Ratchet Plunger	BR. Mild Steel Bar Head Treated
10	1	431003090	Internal 1300 Anderton Circlip 90mm	
11	1	477100085	SKF 6308-2RS Single Row Ball Bearing	
13	1	PFD003	Hollow Shaft	50mm dia Black Mild Steel Round
18	1	477106070	SKF 7307B Ball Bearing	
20	1	382001022	Oil Seal PR1626	
21	1	PFD008	Hollow Shaft Bush	Brass Bar
	4		3/4" x 1/2" Whit. Hex Bolt (Disch. Head to Brg Housing)	Zinc Plated Mild Steel
	4		1/2" Whit. Hex Nut (Discharge Head to Brg Housing)	
	1		3/16" Hex Key Spanner - Short (Drive Shaft to Pulley Coupling)	

### PFH DISCHARGE HEAD

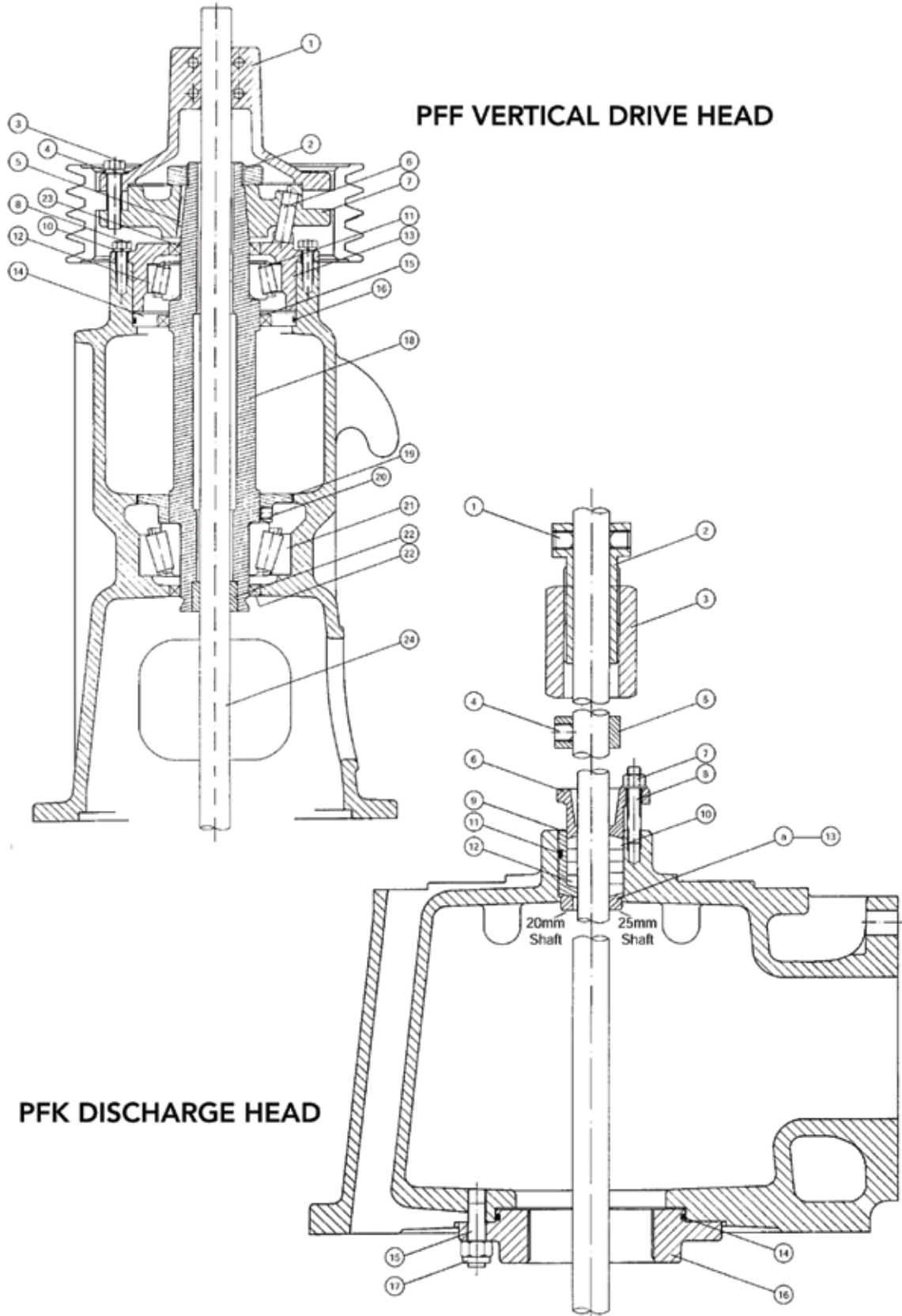
ILLUS NO.	NO. PER UNIT	PART NO.	DESCRIPTION	MATERIAL
1	1	PFH041	Top Drive Shaft 3/4" X 1524mm	Type 431 Smooth Ground SS Bar
22	2	408436306	3/8" x 3/8" Cup Point Socket Setscrew	Stainless Steel
23	1	PFH022J	Drive Shaft Adjustment Collar	BR. Mild Steel
29	2	412120212	3/8" UNC Hex Nut	Brass
30	2	PFH016	Packing Gland Stud	Stainless Steel Type 431
31	1	FMB009	Packing Gland	Grey Cast Iron GR. 12
32	4	LCC029	Packing Gland Ring - Suit 3/4" Shaft	Graphited Packing Crane Type 556 or Turner Bros. TBA25
33	1	PFH008	Packing Gland Washer	BR. Mild Steel
35	6	PFH025	Column Pipe Flange Stud	Stainless Steel Bar Type 431
36	1	PFH026	Column Pipe Flange Gasket	1/16" Rubber Insertion
37	1	PFH023	50mm Column Pipe Flange	Cast SG. Iron Grade 17/24
OR	1	PFH024	65mm Column Pipe Flange	Cast SG. Iron Grade 17/24
38	6	412120212	3/8" UNC Nyloc Nut	Zinc Plated Nyloc
39	1	PFH020J	Shaft Adjust. Jackscrew	46mm BR. Mild Steel Hex
40	1	PFH021	Shaft Jackscrew Sleeve	46mm BR. Mild Steel Hex
41	2	408436306	3/8" x 3/8" Cup Point Socket Setscrew Jackscrew Locking	Stainless Steel
	1	NZW004	Drive Shaft Bearing - 65 NB x 20mm Column Pipe	Brass Sleeve, Moulded Natural Rubber
	1	PHF042	Drive Shaft Journal - 65 NB x 20mm Column Pipe	Type 431 Smooth Ground Stainless Steel Bar
	1	NZV004	Drive Shaft Bearing - 50 NB x 18mm Column Pipe	Brass Sleeve, Moulded Natural Rubber
	1	NZV006	Drive Shaft Journal - 50 NB x 18mm Column Pipe	Type 431 Smooth Ground Stainless Steel Bar
	1	NZV002	Drive Shaft Coupling	CS 1030 BR. Mild Steel
	1		1/2" Pipe Plug Hollow 15 NB Discharge Head Drain	Galvanised Malleable 15 NB Hollow



**HELICAL ROTOR PUMPS**

**PFF/K**

**DRIVEHEAD & DISCHARGE HEAD**





**HELICAL ROTOR PUMPS**

**PFF DRIVEHEAD**

**PFF VERTICAL DRIVE HEAD**

ILLUS NO.	NO. PER UNIT	PART NO.	DESCRIPTION	MATERIAL
1	1	PFF022	Drive Shaft to Pulley Coupling - 3/4" Shaft	Cast SG. Iron GR. 27/12
	1	PFF023	Drive Shaft to Pulley Coupling - 1" Shaft	Cast SG. Iron GR. 27/12
2	1	PFF017	Pulley Hub Retaining Nut	BLK S1040 Steel Round Bar
3	3		2" x 7/16" UNC Bolt	Zinc Plated High Tensile Steel
4	3		7/16" Spring Washer	Zinc Plated Tempered Spring Steel
5	1	432900168	1" x 1/4" Woodruff Key	BR. Mild Steel BS 808
6	2	418110024	1 1/2" x 1/2" Dowel Pin	
7	1	PFF016	Hollow Shaft Pulley Hub	Cast Iron GR. 12 Min.
8	4		1" x 3/8" UNC Hex Bolt	Zinc Plated High Tensile Steel
10	4		3/8" Spring Washer	Zinc Plated Tempered Spring Steel
12	1	477301600	Taper Roller Bearing Cone (Timken 39581)	
12	1	477301602	Taper Roller Bearing Cup (Timken 395200)	
13	1	PFF018	Upper Bearing Carrier	Cast Iron GR. 12 Min.
14	1	PFF019	Upper Bearing Grease Retaining Plate	Cast Iron GR. 12
15	1	382001048	Grease Seal PR2989	
16	1	383002029	O-Gasket AN6230-29 (BS 251)	Rubber
18	1	PFF003	Hollow Shaft	SG. Cast Iron GR. 27/12 High Tensile
19	1	PFF021	Lower Bearing Sealing Plate	Cast Iron GR. 12
20	2	408305306	3/8" x 3/8" Whit. Knurled Cup Point Socket Setscrew	Zinc Plated
21	1	477301540	Roller Bearing (Timken 65225)	
21	1	477301542	Roller Bearing (Timken 65500)	
22	1	PFF029	Hollow Shaft Bush - 3/4" Shaft	Gunmetal
	1	PFF008	Hollow Shaft Bush - 1" Shaft	Gunmetal
23	2	382001036	Grease Seal PR 3458	
24	1	PFF041	Top Drive Shaft - 3/4" x 1829mm	Smooth Ground Stainless Steel Bar Type 431
	1	PFF040	Top Drive Shaft - 1" x 1829mm	Smooth Ground Stainless Steel Bar Type 431
	4		2" x 1/2" UNC Hex Bolt (Drive Head to Discharge Head)	Zinc Plated High Tensile Steel
	4		1/2" UNC Hex Nut (Drive Head to Discharge Head)	Zinc Plated Mild Steel
	4		1/2" Spring Washer	Zinc Plated Tempered Spring Steel
	4		1" x 3/8" UNC Socket Head Capscrew (Drive Shaft Clamping Cap)	Zinc Plated
	1		5/16" Hex Key Spanner (Short Drive Shaft Clamping Bolt)	



### HELICAL ROTOR PUMPS

# PFK DISCHARGE HEAD

## PFF DISCHARGE HEAD

ILLUS NO.	NO. PER UNIT	PART NO.	DESCRIPTION	MATERIAL
1	2	408436306	3/8" x 3/8" UNC Cup Point Socket Setscrew - 3/4" Shaft	Stainless Steel
	2	408630558	M12 x 16 Plain Cup Point Socket Setscrew - 1" Shaft	Stainless Steel
2	1	PFH020J	Shaft Adjustment Jackscrew - 3/4" Shaft	46mm BR. Mild Steel Hex
	1	PFK020J	Shaft Adjustment Jackscrew - 1" Shaft	55mm BR. Mild Steel Hex
3	1	PFH021	Shaft Adjustment Jackscrew Sleeve - 3/4" Shaft	46mm BR. Mild Steel Hex
	1	PFK021	Shaft Adjustment Jackscrew Sleeve - 1" Shaft	55mm BR. Mild Steel Hex
4	2		3/8" x 3/8" UNC Cup Point Socket Setscrew - 3/4" Shaft	Stainless Steel
	2		M12 x 16 Plain Cup Point Socket Setscrew - 1" Shaft	Stainless Steel
5	1	PFH022J	Drive Shaft Adjustment Collar - 3/4" Shaft	39mm BR. Mild Steel
	1	PFK022	Drive Shaft Adjustment Collar - 1" Shaft	50mm dia S1214 Bar
6	1	PFK032	Packing Gland - 3/4" Shaft	Cast Iron GR. 12
	1	PFK009	Packing Gland - 1" Shaft	Cast Iron GR. 12
7	2	412601212	3/8" UNC Hex Nut	Brass
8	2	PFK016	3/8" dia Packing Gland Stud	Type 431 Stainless Steel
9	1	PFK033	Packing Gland Sleeve - 3/4" Shaft	Cast Gunmetal
10	5	PFK029	Packing Gland Ring - 1" Shaft	
11	1	383001027	O-Ring AN6227-27 (BS222) - 3/4" Shaft	Rubber
12	4	LCC029	Packing Ring - 3/4" Shaft	Graphited Packing Crane Type 556 or Turner Bros. TBA25
A	1	PFK044	Discharge Head Body Bush	Brass
14	1	383002026	O-Gasket AN6230-26 - BS248	Rubber
15	6	PFK025	Column Pipe Flange Stud	1/2" dia Type 431 Stainless Steel Round Bar
16	1	PFK023	Column Pipe Flange 3" (80mm)	Cast SG. Iron 24/17
	1	PFK024	Column Pipe Flange 4" (100mm)	Cast SG. Iron 24/17
17	6	412120116	1/2" Whit. Nyloc Nut	Zinc Plated
	4		1 1/4" x 1/2" UNC Hex Bolt (Drive Head to Discharge Head)	Zinc Plated High Tensile Steel
	4		1/2" Spring Washer (Drive Head to Discharge Head Bolt)	Zinc Plated Tempered Spring Steel
	1		3/16" Hex Key Spanner Short Locking Screw Spanner - 20mm Shaft	
	1		1/2" Pipe Plug Discharge Head Drain	Galvanised Malleable 15 NB Hollow
	1		6mm Hex Key Wrench Short - 25mm Shaft	
	1	NZV002	Drive Shaft Coupling - 20mm Shaft	1 1/8" dia CS 1030 BR. Mild Steel
	1	NZX004	Bearing - 20mm Shaft	Brass Sleeve Moulded Natural Rubber
	1	PFH042	Drive Shaft Adaptor Journal - 20mm Shaft	7/8" dia Smooth Ground SS Bar
	1	PFK043	Drive Shaft Coupling - 25mm Shaft	1 1/2" dia CS 1030 BR. Mild Steel
	1	NZY004	Bearing - 25mm Shaft	Brass Sleeve Moulded Natural Rubber
	1	PFK042	Drive Shaft Adaptor Journal - 25mm Shaft	1 1/8" dia Type 431 Smooth Ground SS Bar