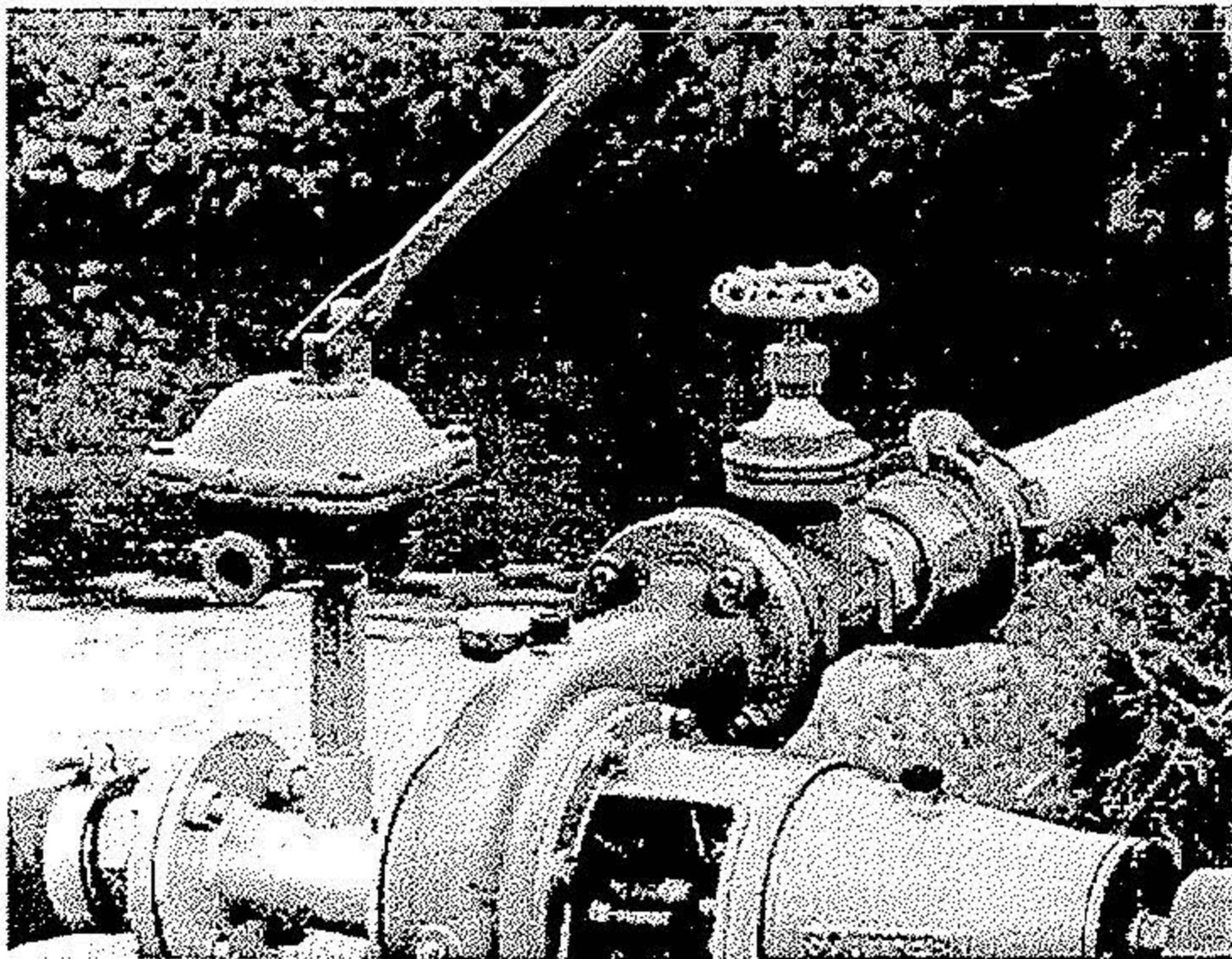




SOUTHERN CROSS Hand Operated DIAPHRAGM PUMP

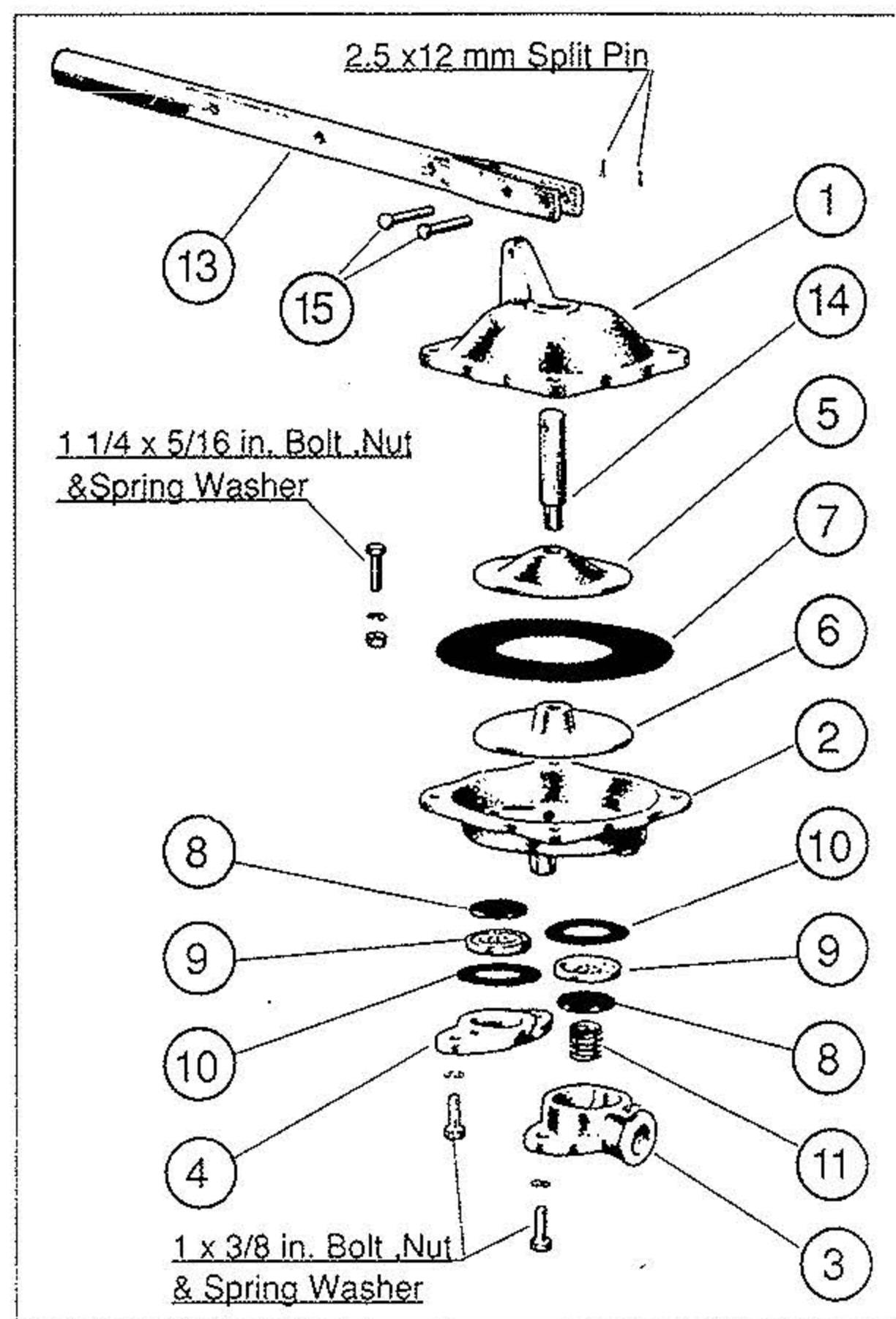
Particularly suited as a priming pump for Centrifugal Pumps. It is preferable to mount the Diaphragm Pump into the suction line, close to the centrifugal pump.



CAPACITY: 0.5 litres per second against discharge heads of up to 12 m, and with a suction lift not exceeding 7.5 m.

SPECIFICATIONS: Suction-- screwed 25NB (1 in BSP) female. Discharge--- screwed 20NB (3/4 in BSP) female. Body--- cast iron

KDC PARTS LIST: 1.Body - top half. 2.Body - bottom half. 3.Discharge Flange. 4.Suction Flange. 5.Diaphragm Top Plate. 6.Diaphragm Bottom Plate. 7.Diaphragm. 8.Valve Rubber. 9.ValveSeat. 10.Suction and Discharge Flange Gasket. 11.Discharge Valve Spring. 13.Handle Assembly. 14.Plunger Rod. 15.Handle Pivot Pin.



As Pentair is one of constant improvement, we reserve the right to make specification changes without notice and without incurring liability.

